

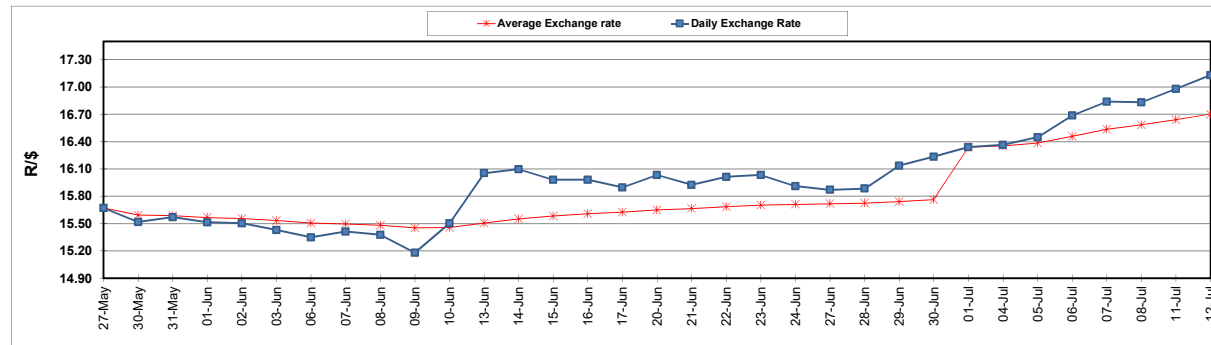
	PETROL 95 ULP	PETROL 93 ULP & LRP	DIESEL 0.05%	DIESEL 0.005%	ILL. PAR.
GAUTENG PUMP PRICE (SA c/l) AS FROM 06/07/2022	2,674.000	2,631.000	-	-	-
WHOLESALE PRICE (SA c/l) AS FROM 06/07/2022	-	-	2,540.440	2,552.840	1,986.288
SINGLE NATIONAL MAXIMUM RETAIL PRICE	-	-	-	-	2,623.000
BASIC FUEL PRICE - 12/07/2022 (SA c/l)	1,499.604	1,464.127	1,609.807	1,621.350	1,630.214
PRESS RELEASE CONTRIBUTION TO BFP 06/07/2022 - 12/07/2022 (SA c/l)	1,689.410	1,646.410	1,763.630	1,776.030	1,768.128
UNIT OVER/(UNDER) RECOVERY - 01/07/2022 (SA c/l)	189.806	182.283	153.823	154.680	137.914
AVERAGE BASIC FUEL PRICE 01/07/2022 - 12/07/2022	1,566.297	1,516.550	1,632.962	1,643.553	1,626.294
AVERAGE UNIT OVER/(UNDER) RECOVERY 01/07/2022 - 12/07/2022	54.863	69.110	72.168	74.352	79.584

ANALYSIS MOVEMENT OF AVERAGE OVER/(UNDER) RECOVERY

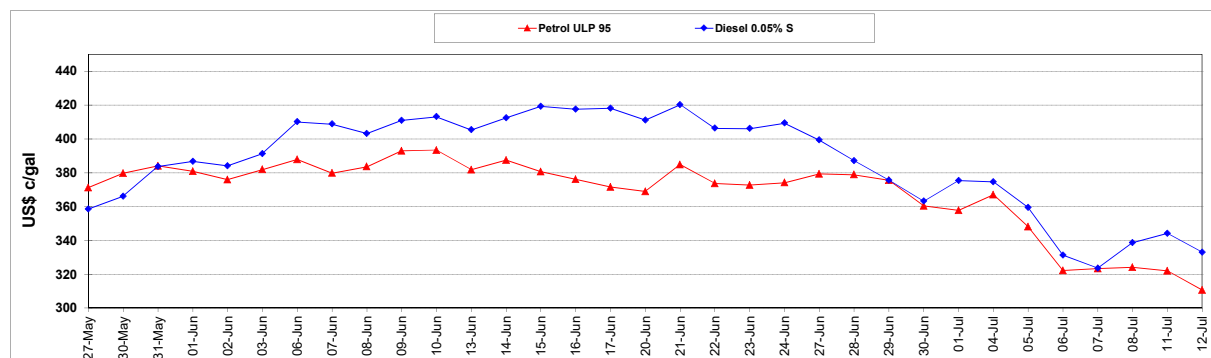
	PETROL 95	PETROL 93	DIESEL 0.05%	DIESEL 0.005%	ILL. PAR.
- MOVEMENT IN INTERNATIONAL PRODUCT PRICES	142.925	154.375	163.978	166.757	171.019
- MOVEMENT IN EXCHANGE RATE	(88.062)	(85.265)	(91.810)	(92.405)	(91.435)
AVERAGE UNIT OVER/(UNDER) RECOVERY 01/07/2022 - 12/07/2022	54.863	69.110	72.168	74.352	79.584

R/\$ EXCHANGE RATE - (R/\$17.1298 - 12/07/2022)

EXCHANGE RATE USED IN BASIC FUEL PRICE



INTERNATIONAL PRODUCT PRICES OF BASKET USED IN BASIC FUEL PRICE



BASIC FUEL PRICE IN SA CENTS PER LITRE

